
We Build It
better for *less*

Foundation Waterproofing/Restoration Handbook

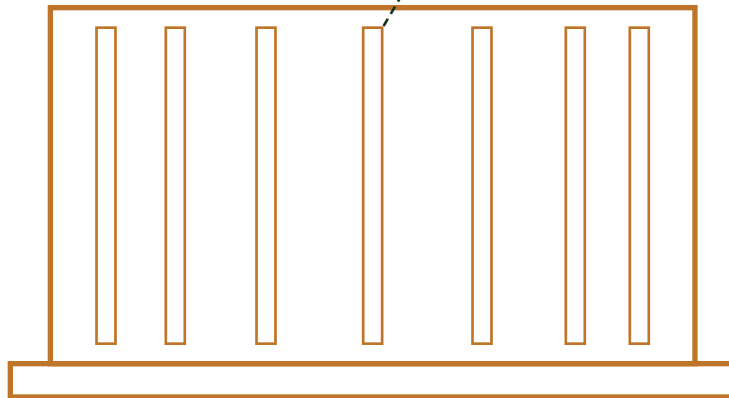
diversified
CONCRETE
block & brick

The Most Cost Effective Way to Support Your Walls

WHAT we do

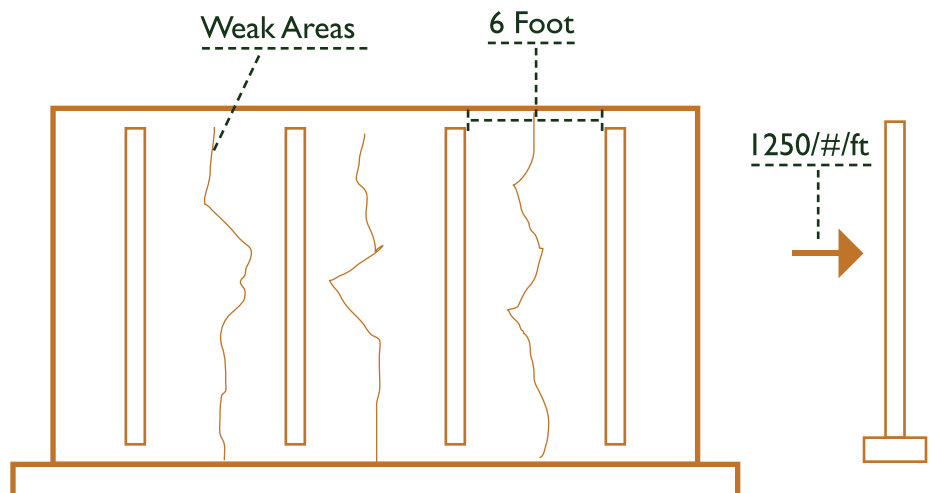
Epoxy coated steel alloy placed every 2-3 feet supplying a safety factor of up to 5 times the required resistance.

Engineered width supplying varying strength as needed along the wall making the Durabar system superior.



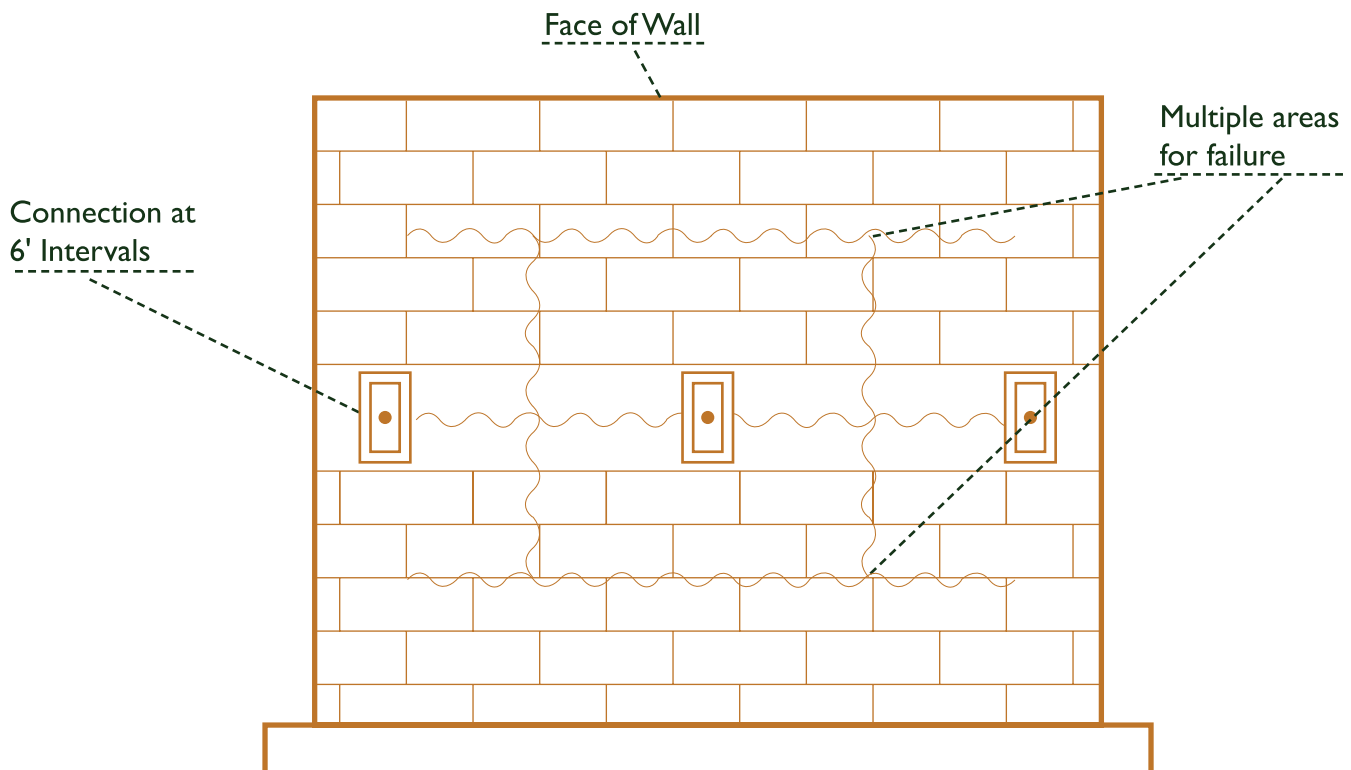
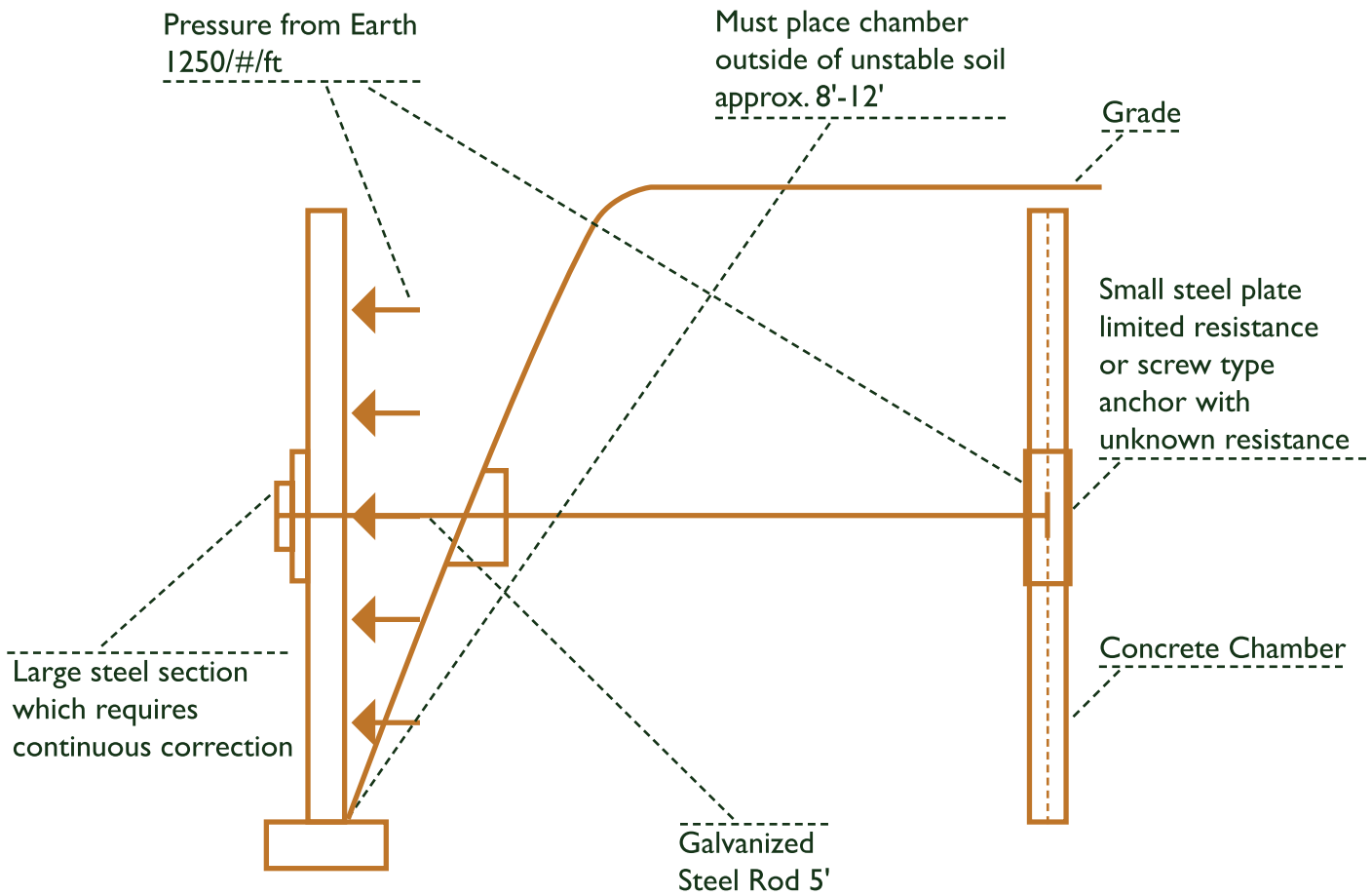
WHAT others do

Material load is distributed along entire wall not just spacing every 6 foot; recipe for failure.

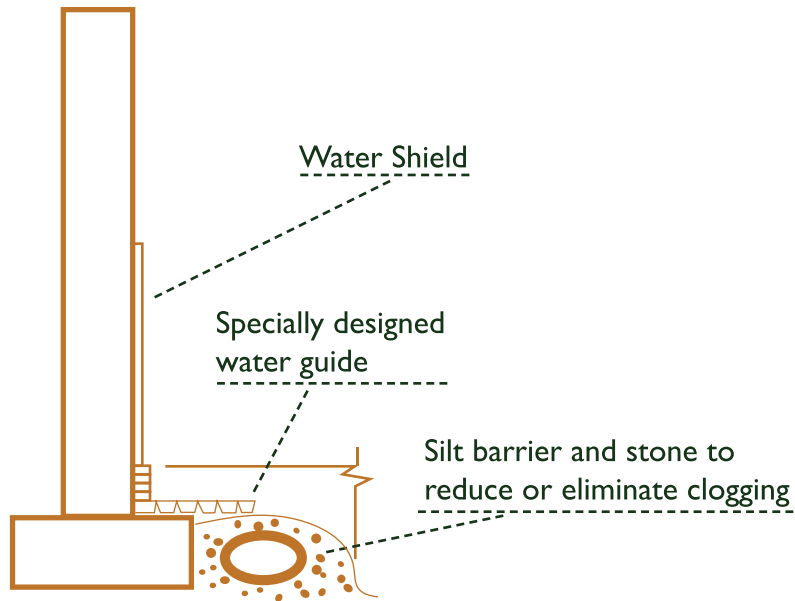


Anchor Systems

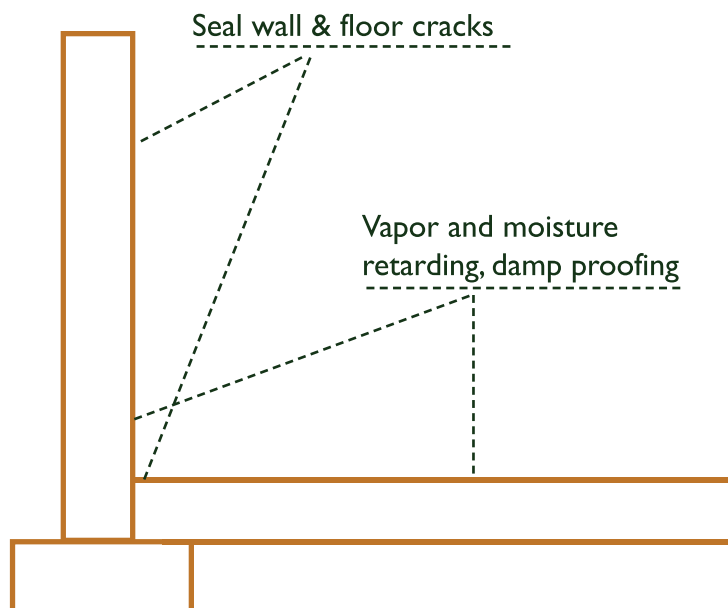
have numerous disadvantages



Interior Drain System



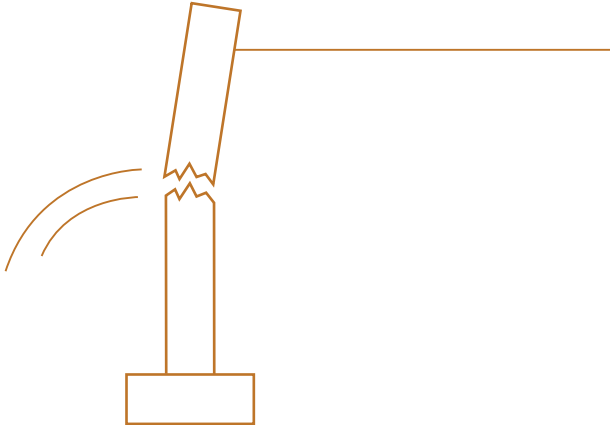
Mild Moisture Renovation



Ultimate Correction

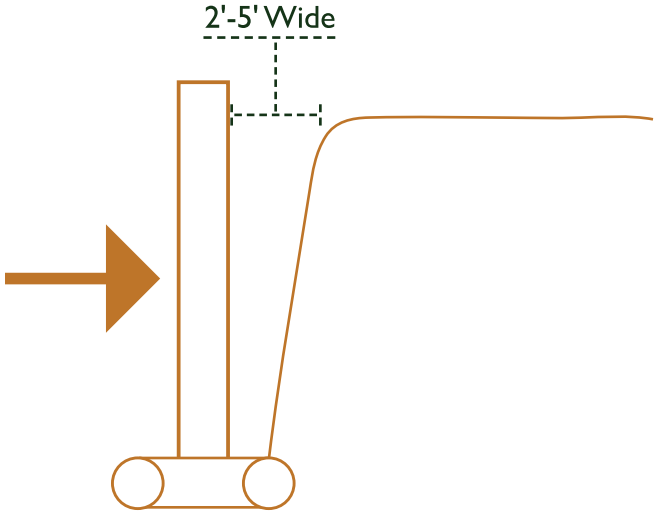
without destruction

before

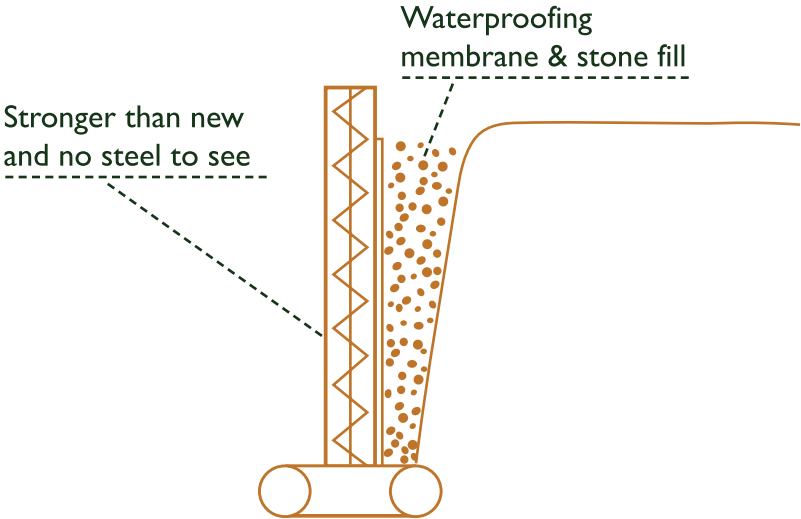


OUR solution

Push it back, waterproof & reinforce from the inside.

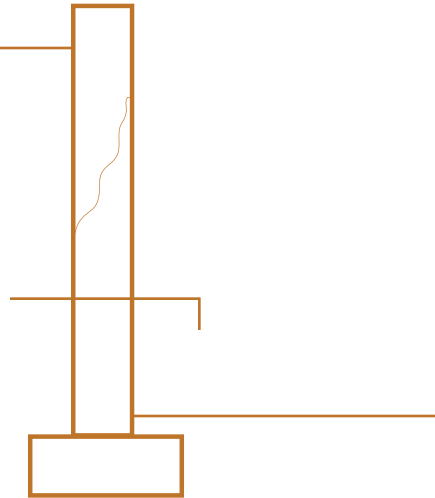


after



problem

Water leaks in through centralized areas.
(water line, north wall, etc.)



CORRECTIVE action

Only fix what's broken and save money.

Waterproofing membrane,
stone fill, topped with topsoil

